

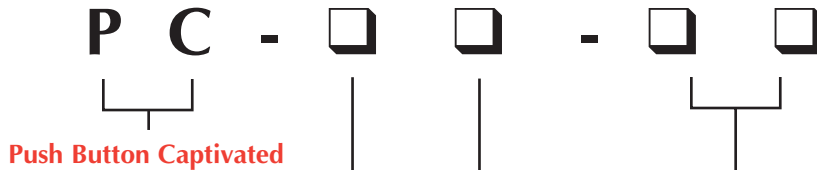


# PUSH BUTTON ACTUATORS

## Heavy-Duty Push Button Actuators

operated valves or in panel mounting applications. These push buttons are available in a variety of colors, allowing you to color code, or easily differentiate between valves when designing control systems. They feature a built-in spring so the button always returns to the extended position when released with no additional load on the valve.

The design of these push buttons allows complete actuation of the valve with no over-travel or side load to the valve assuring superior performance and long life.



**Push Button Captivated**

**Size Mounting Thread**  
 3 - 5/8-32 thd. (16 mm)  
 4 - 7/8-32 thd. (22 mm)  
 5 - 1 3/16-28 thd. (30 mm)

**Button Style**  
 E - Extended  
 F - Flush  
 M - Mushroom

**Push Button color**

**BK** - Black    **WH** - White    **RD** - Red  
**GN** - Green    **YL** - Yellow    **BL** - Blue  
**OR** - Orange    **GR** - Grey

Note: Non-standard colors available; consult factory



**Part No.**    **Description**  
PC-3E-(color) 5/8-32 Thd., Extended  
*(specify color)*



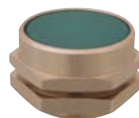
**Part No.**    **Description**  
PC-4E-(color) 7/8-32 Thd., Extended  
*(specify color)*



**Part No.**    **Description**  
PC-5E-(color) 1 3/16-28 Thd., Extended  
*(specify color)*



**Part No.**    **Description**  
PC-3F-(color) 5/8-32 Thd., Flush  
*(specify color)*



**Part No.**    **Description**  
PC-4F-(color) 7/8-32 Thd., Flush  
*(specify color)*



**Part No.**    **Description**  
PC-5F-(color) 1 3/16-28 Thd., Flush  
*(specify color)*



**Part No.**    **Description**  
PC-3M-(color) 5/8-32 Thd., Mushroom  
*(specify color)*



**Part No.**    **Description**  
PC-4M-(color) 7/8-32 Thd., Mushroom  
*(specify color)*



**Part No.**    **Description**  
PC-5M-(color) 1 3/16-28 Thd., Mushroom  
*(specify color)*